



INTEXPOR STEEL



QUALITY STAINLESS STEEL SOLUTIONS

WWW.INTEXPORSTEEL.COM

INTEXPORST STEEL

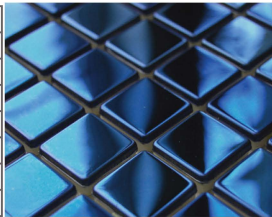
QUALITY STAINLESS STEEL SOLUTIONS



Designer Stainless Steel Sheets (PVD Ti Coated)

Cold Rolled Stainless Steel

Grade	304, 316, 321, 201, 202, 430, 409L
Finish	8K, NO.4, Patterened (in metallic colours)
Thickness	0.3mm - 3 mm
Width(mm)	600- 2000
Length(mm)	1000 - 3000 or as per requirement
Packing	Strong wooden sheet packets
Weight	2,000kgs - 3000 kgs
Application	Luxury interior decoration and fabrication



Stainless Steel Plates

Hot Rolled Stainless Steel

Grade	304, 316, 321, 201, 202, 430, 409L
Finish	No.1 Annealed and Pickled
Thickness	2.5mm - 30 mm.
Width(mm)	600- 2500
Length(mm)	1000 - 3000 or as per requirement
Packing	Strong wooden sheet packets
Weight	2000kgs - 5000 kgs
Application	Fabrication, Industrial Use



Stainless Steel Fabrication Customized Designs

Cold Rolled Stainless Steel

Grade	304 , 201, 430
Finish	BA , 2B, Coloured
Thickness	1mm - 20 mm
Packing	Strong Export Packing in Cartons
Details	We can now fabricate any design as per the client requirement in excellent mirror finish.
Application	Corporate gifts, Public facilities, Furniture Interior design, Showpieces



Stainless Steel Coils

Hot Rolled Stainless Steel

Grade	304, 316, 321, 201, 202, 430, 409L, 420J1/J2
Finish	No.1 Annealed & Pickled , Pickled White Coils
Thickness	2.5mm - 20mm
Width	385mm - 2000mm
Packing	Export iron packing with edge protection
Coil Weight	5000kgs - 25000 kgs
Application	Industrial , Rerolling, Knife (420 J2)



APPLICATIONS



WE SUPPLY VARIOUS GRADES & SPECS FOR EVERY KIND OF END USE FROM UTENSILS TO LUXURY DECOR.



INTEXPORTE STEEL

QUALITY STAINLESS STEEL SOLUTIONS

Patterned Stainless Steel Designs



IDS-H2



IDS-H4



IDS-H6



IDS-H7



IDS-H10



IDS-H12



IDS-H13



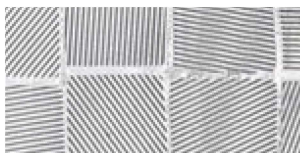
IDS-H14



IDS-H19



IDS-H23



IDS-H28



IDS-H30

HEADQUARTERS

Hong Kong: 16th Floor, Unit 1635, Star House, 3, Salisbury Road, Tsim Sha Tsui, Kowloon, Hong Kong
Tel: 00852-27357758 / 59, Fax: 00852-27300946, 27301817 E-mail: Enquiry@intexportsteel.com

www.intexportsteel.com

OVERSEAS OFFICES :

Ho Chi Minh City (Vietnam) - Tel: 0084-8-39483994, Fax: 0086-8-39483991
Foshan (China) - Tel: 0086-757-83132599, Fax: 0086-757-83132599
Shenzhen (China) - Tel: 0086-755-82185428, Fax: 0086-755-82185438